



Service through Experience

Now in:

Polokwane, Limpopo

Nelspruit, Mpumalanga

Potchefstroom, Northwest

Somerset West, Western Cape

Rustenburg, Northwest

info@netcall.co.za | www.netcall.co.za

Yealink SIP-T48U

A Revolutionary SIP Phone with a 7-inch Touch Screen



7-inch
Touch Screen



Optima
HD Voice



Dual USB
Ports



Acoustic
Shield



Unified
Firmware



Expansion
Module



Opus Codec

Key Features & Benefits

Easy Customisation and High Expansibility

The SIP-T48U has a seven-inch, 800 x 480-pixel, backlit-color touch screen, which enables a rich visual presentation and easy navigation. Accompanied by two USB ports, the T48U is your right-hand man in the office that makes Bluetooth, Wi-Fi, USB headset and USB recording possible, and you can use any two of them freely according to your needs to enrich phone features. Meanwhile, the phone not only has 29 one-touch DSS keys that can be easily programmed to various features, but also can connect up to three expansion modules, for up to 180 additional buttons with a screen-based LCD display and LED system.

HD Audio

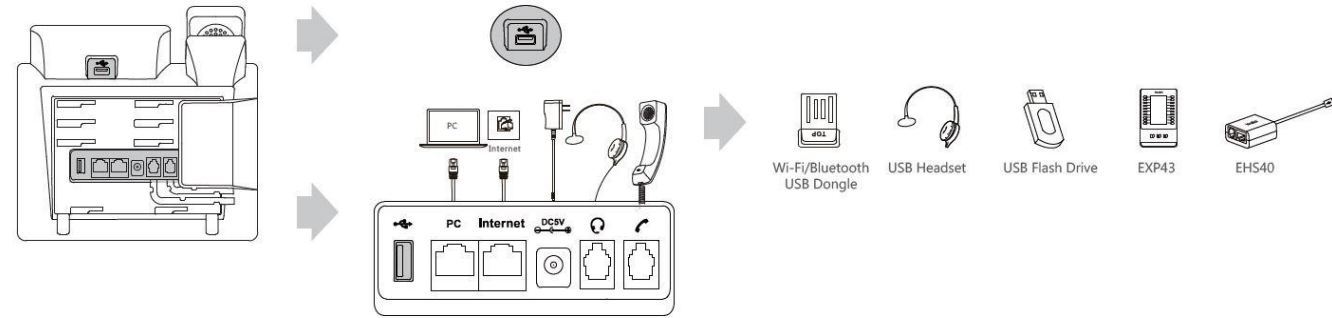
Yealink Optima HD Voice technology combines cutting-edge hardware and software with wideband technology for maximum acoustic performance. Being a totally open, highly versatile audio codec, Opus, is designed to perform a higher HD audio quality than other wideband codecs in a high network bandwidth; However, if your current network quality is poor, Opus can provide you with a better audio quality than other narrowband codecs. And its hearing aid compatible (HAC) handset helps the person who is with hearing loss to hear the voice more clearly.

Efficient Installation and Provisioning

Yealink T4U series supports efficient provisioning and effortless mass deployment with Yealink's Redirection and Provisioning Service (RPS) and Boot mechanism to help you realize the Zero Touch Provisioning without any complex manual settings, which makes the T4U series simple to deploy, easy to maintain and upgrade. Furthermore, a unified firmware and auto-p template that applies to all T4U phone models, saves even more time and costs for businesses, as well as simplifies the management and maintenance.

Secure Transport and Interoperability

Yealink T4U series uses SIP over Transport Layer Security (TLS/SSL), which is the latest network security technology. It's also compatible with leading soft switch suppliers, such as 3CX, Broadsoft Broadworks. Moreover, it is carried with dual firmware images that gives you an enterprise-level protection to avoid bricking your system once upgrade failed.



A Revolutionary SIP Phone for Enhancing Productivity

Yealink presents a dynamic business communication solution to executives and professionals with the new SIP-T48U IP phone. The phone employs an appealing large touch screen that makes the switch between pages and applications swift, easy and convenient. United Yealink Optima HD Voice technology and wideband codec of Opus, the T48U awards you the superb audio quality and crystal-clear voice communications. Moreover, the T48U puts dual USB ports in a phone that makes Bluetooth, Wi-Fi, USB headset and USB recording come true, and you can use any two of them freely according to your needs. The Yealink new T4U series offers the same elegant appearance as the T4 line, but with improvements for greater interoperability and better collaboration.

- 7" 800X480-pixel color touch screen with backlight
- Dual USB ports
- Dual firmware images
- Opus codec support
- T4U Auto -P template unified
- T4U firmware unified
- Up to 16 SIP accounts
- PoE support
- Headset & EHS support
- Wi-Fi via WF40/WF50
- Bluetooth via BT40/BT41
- USB recording
- Supports color-screen expansion modules
- Stand with 2 adjustable angles
- Wall mountable
- Dual -port Gigabit ethernet
- Paperless label design

Audio Features

- > HD voice: HD handset, HD speaker
- > Hearing aid compatible (HAC) handset
- > Acoustic Shield
- > Smart Noise Filtering
- > Codecs: AMR-WB (optional), AMR-NB (optional), Opus, G.722, G.711(A/μ), G.723.1, G.729AB, G.726, iLBC
- > DTMF: In-band, Out-of-band (RFC 2833) and SIP INFO
- > Full-duplex hands-free speakerphone with AEC
- > VAD, CNG, AEC, PLC, AJB, AGC

Phone Features

- > 16 VoIP accounts
- > Call hold, mute, DND
- > One-touch speed dial, hotline
- > Call forward, call waiting, call transfer
- > Group listening
- > Emergency call
- > Redial, call return, auto answer
- > 10-way conferencing
- > Direct IP call without SIP proxy
- > Ring tone selection/import/delete
- > Set date time manually or automatically
- > Dial plan, XML Browser, action URL/URI
- > RTCP-XR (RFC3611), VQ-RTCPXR (RFC6035)
- > USB port (2.0 compliant) for:
 - Bluetooth earphone through BT40/BT41
 - Contact synchronization through BT40/BT41
 - Simultaneous connection of one headset and one mobile phone through BT40/BT41
 - Wi-Fi through WF40/WF50
 - USB call recording through USB flash drive
 - USB headset
 - Expansion Module EXP43
 - Wireless Headset Adapter EHS40
- > USB/Bluetooth connectivity to Yealink CP900/CP700 speakerphone, USB connectivity to Yealink UH36 headset:
 - Basic functions: Answer / end, call mute
 - Enhanced function: audio optimization, redial, call hold, volume synchronization, multiple calls control
- > Enhanced DSS key

Directory

- > Local phonebook up to 1000 entries
- > Black list
- > XML/LDAP remote phonebook
- > Smart dialing
- > Phonebook search/import/export
- > Call history: dialed/received/missed/forwarded

IP-PBX Features

- > Busy Lamp Field (BLF)
- > Bridged Line Appearance (BLA)
- > Anonymous call, anonymous call rejection
- > Hot-desking, voice mail
- > Flexible seating
- > Executive and Assistant
- > Call park, call pickup
- > Centralized call recording, call recording
- > Visual voice mail

Display and Indicator

- > 7" 800 x 480-pixel color touch screen with backlight
- > 24 bit depth color
- > LED for call and message waiting indication
- > Wallpaper
- > Intuitive user interface with icons and soft keys
- > Multilingual user interface
- > Caller ID with name, number and photo
- > Screensaver
- > Power saving

Feature keys

- > 29 one-touch DSS keys
- > 7 features keys: message, headset, hold, mute, transfer, redial, hands-free speakerphone
- > 6 navigation keys
- > Volume control keys
- > Illuminated mute key
- > Illuminated headset key
- > Illuminated hands-free speakerphone key

Interface

- > Dual-port Gigabit Ethernet
- > Power over Ethernet (IEEE 802.3af), class 3
- > 2 x USB port (2.0 compliant)
- > 1 x RJ9 (4P4C) handset port
- > 1 x RJ9 (4P4C) headset port

Other Physical Features

- > Color: Classic Grey
- > Wall mountable (optional)
- > External Yealink AC adapter (optional): AC 100~240V input and DC 5V/2A output
- > USB output currency: 5V 1A
- > Power consumption (PSU): 1.8-3.8W
- > Power consumption (PoE): 2.3-4.7W
- > Dimension (W*D*H*T): 266mm*226mm*185mm*54mm
- > Operating humidity: 10~95%
- > Operating temperature: -10~50°C (+14~122°F)

Management

- > Configuration: browser/phone/auto-provision
- > Auto provision via FTP/TFTP/HTTP/HTTPS for mass deploy
- > Auto-provision with PnP
- > Zero-sp-touch, TR-069
- > Phone lock for personal privacy protection
- > Reset to factory, reboot
- > Package tracing export, system log

Network and Security

- > SIP v1 (RFC2543), v2 (RFC3261)
- > Call server redundancy supported
- > NAT traversal: STUN mode
- > Proxy mode and peer-to-peer SIP link mode
- > IP assignment: static/DHCP
- > HTTP/HTTPS web server
- > Time and date synchronization using SNTP
- > UDP/TCP/DNS-SRV(RFC 3263)
- > QoS: 802.1p/Q tagging (VLAN), Layer 3 ToS DSCP
- > SRTP for voice
- > Transport Layer Security (TLS)
- > HTTPS certificate manager
- > AES encryption for configuration file
- > Digest authentication
- > OpenVPN, IEEE802.1X
- > IPv6
- > LLDP/CDP/DHCP VLAN
- > ICE

Package Features

- > Package content:
 - Yealink SIP-T48U IP phone
 - Handset with handset cord
 - Ethernet Cable (2m CAT5E UTP Cable)
 - Stand
 - Quick Start Guide
 - Power Adapter (Optional)
 - Wall Mount Bracket (Optional)
- > Qty/CTN: 5 PCS
- > N.W/CTN: 7.9 kg
- > G.W/CTN: 8.4 kg
- > Giftbox size: 324mm*263mm*128mm
- > Carton Meas: 660mm*338mm*273mm

